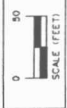
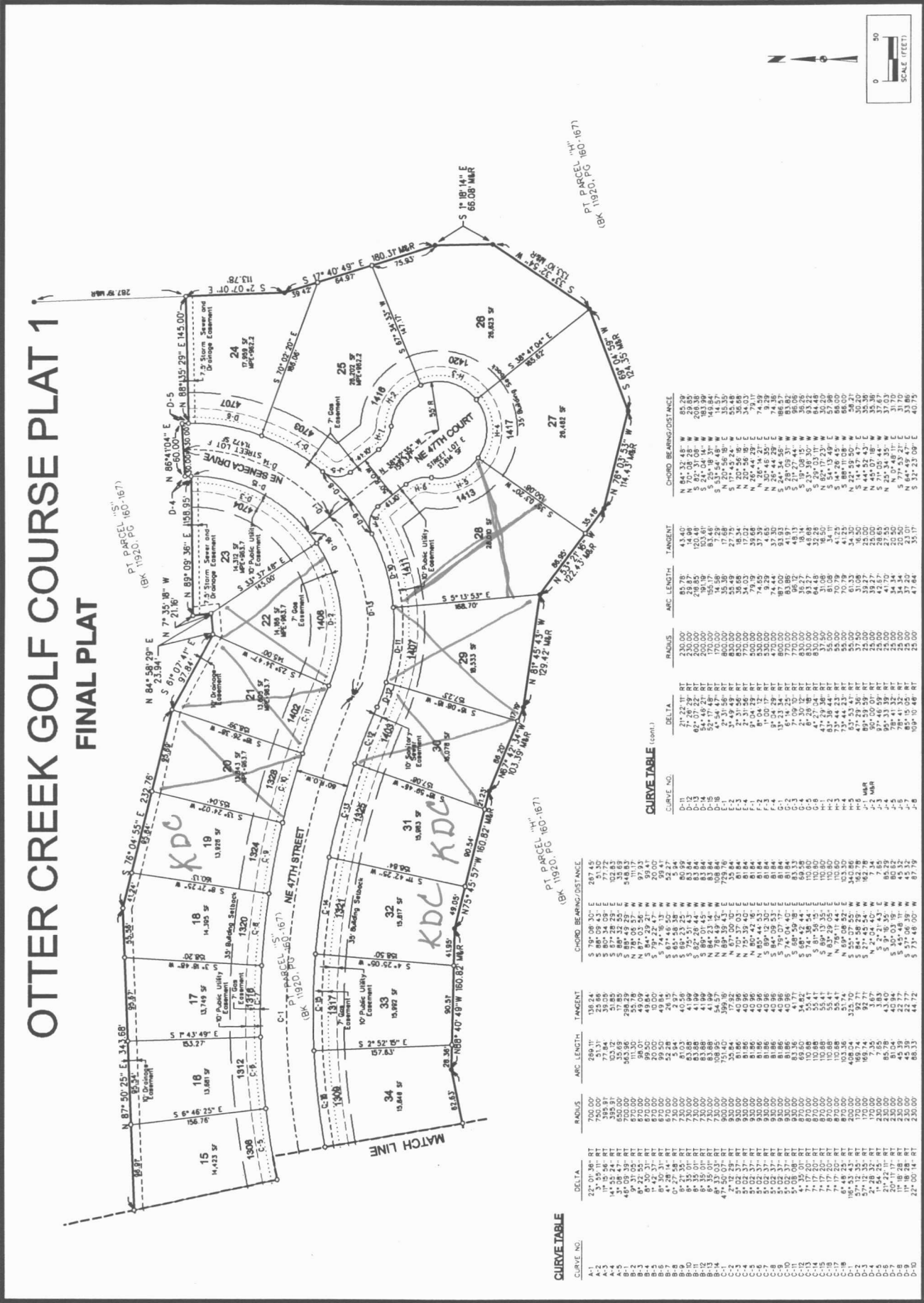


OTTER CREEK GOLF COURSE PLAT 1

FINAL PLAT



CURVE TABLE

CURVE NO.	DELTA	RADIUS	ARC LENGTH	TANGENT	CHORD BEARING/DISTANCE
A-1	22° 01' 38" RT	700.00	289.11	139.24	S 79° 08' 30" E 287.45
A-2	3° 35' 11" RT	51.30	23.66	11.83	S 88° 09' 43" E 51.30
A-3	14° 52' 24" RT	398.91	153.72	76.86	S 77° 28' 29" E 153.72
A-4	14° 52' 24" RT	398.91	153.72	76.86	S 77° 28' 29" E 153.72
B-1	40° 00' 37" RT	250.00	103.69	51.85	S 89° 42' 25" E 51.85
B-2	9° 30' 05" RT	875.00	111.30	55.78	N 78° 08' 57" W 111.30
B-3	6° 50' 31" RT	875.00	99.50	49.84	S 84° 22' 21" W 99.50
B-4	4° 42' 37" RT	875.00	85.00	43.00	S 79° 22' 47" W 85.00
B-5	4° 28' 14" RT	875.00	82.28	41.15	S 87° 48' 50" W 82.28
B-6	9° 21' 35" RT	730.00	101.53	45.59	S 85° 23' 28" W 101.53
B-7	8° 13' 01" RT	730.00	83.88	41.99	S 75° 51' 43" W 83.88
B-8	8° 13' 01" RT	730.00	83.88	41.99	S 75° 51' 43" W 83.88
B-9	8° 13' 01" RT	730.00	83.88	41.99	S 75° 51' 43" W 83.88
B-10	8° 13' 01" RT	730.00	83.88	41.99	S 75° 51' 43" W 83.88
B-11	8° 13' 01" RT	730.00	83.88	41.99	S 75° 51' 43" W 83.88
B-12	8° 13' 01" RT	730.00	83.88	41.99	S 75° 51' 43" W 83.88
B-13	8° 13' 01" RT	730.00	83.88	41.99	S 75° 51' 43" W 83.88
B-14	8° 13' 01" RT	730.00	83.88	41.99	S 75° 51' 43" W 83.88
C-1	47° 56' 07" RT	900.00	151.40	59.10	N 89° 39' 43" E 59.10
C-2	47° 56' 07" RT	900.00	151.40	59.10	N 89° 39' 43" E 59.10
C-3	5° 02' 37" RT	930.00	81.86	40.96	S 79° 07' 17" E 81.86
C-4	5° 02' 37" RT	930.00	81.86	40.96	S 79° 07' 17" E 81.86
C-5	5° 02' 37" RT	930.00	81.86	40.96	S 79° 07' 17" E 81.86
C-6	5° 02' 37" RT	930.00	81.86	40.96	S 79° 07' 17" E 81.86
C-7	5° 02' 37" RT	930.00	81.86	40.96	S 79° 07' 17" E 81.86
C-8	5° 02' 37" RT	930.00	81.86	40.96	S 79° 07' 17" E 81.86
C-9	5° 02' 37" RT	930.00	81.86	40.96	S 79° 07' 17" E 81.86
C-10	5° 02' 37" RT	930.00	81.86	40.96	S 79° 07' 17" E 81.86
C-11	5° 02' 37" RT	930.00	81.86	40.96	S 79° 07' 17" E 81.86
C-12	7° 12' 00" RT	875.00	103.69	51.85	S 89° 18' 44" E 51.85
C-13	7° 12' 00" RT	875.00	103.69	51.85	S 89° 18' 44" E 51.85
C-14	7° 12' 00" RT	875.00	103.69	51.85	S 89° 18' 44" E 51.85
C-15	7° 12' 00" RT	875.00	103.69	51.85	S 89° 18' 44" E 51.85
C-16	7° 12' 00" RT	875.00	103.69	51.85	S 89° 18' 44" E 51.85
C-17	7° 12' 00" RT	875.00	103.69	51.85	S 89° 18' 44" E 51.85
C-18	7° 12' 00" RT	875.00	103.69	51.85	S 89° 18' 44" E 51.85
C-19	7° 12' 00" RT	875.00	103.69	51.85	S 89° 18' 44" E 51.85
C-20	7° 12' 00" RT	875.00	103.69	51.85	S 89° 18' 44" E 51.85
D-1	16° 51' 43" RT	200.00	40.84	20.42	S 71° 04' 40" W 40.84
D-2	27° 22' 11" RT	200.00	70.00	35.00	S 51° 35' 39" W 70.00
D-3	27° 22' 11" RT	200.00	70.00	35.00	S 51° 35' 39" W 70.00
D-4	27° 22' 11" RT	200.00	70.00	35.00	S 51° 35' 39" W 70.00
D-5	27° 22' 11" RT	200.00	70.00	35.00	S 51° 35' 39" W 70.00
D-6	27° 22' 11" RT	200.00	70.00	35.00	S 51° 35' 39" W 70.00
D-7	27° 22' 11" RT	200.00	70.00	35.00	S 51° 35' 39" W 70.00
D-8	27° 22' 11" RT	200.00	70.00	35.00	S 51° 35' 39" W 70.00
D-9	27° 22' 11" RT	200.00	70.00	35.00	S 51° 35' 39" W 70.00
D-10	27° 22' 11" RT	200.00	70.00	35.00	S 51° 35' 39" W 70.00

CURVE TABLE (cont.)

CURVE NO.	DELTA	RADIUS	ARC LENGTH	TANGENT	CHORD BEARING/DISTANCE
D-11	27° 22' 11" RT	200.00	70.00	35.00	S 51° 35' 39" W 70.00
D-12	27° 22' 11" RT	200.00	70.00	35.00	S 51° 35' 39" W 70.00
D-13	27° 22' 11" RT	200.00	70.00	35.00	S 51° 35' 39" W 70.00
D-14	27° 22' 11" RT	200.00	70.00	35.00	S 51° 35' 39" W 70.00
D-15	27° 22' 11" RT	200.00	70.00	35.00	S 51° 35' 39" W 70.00
D-16	27° 22' 11" RT	200.00	70.00	35.00	S 51° 35' 39" W 70.00
D-17	27° 22' 11" RT	200.00	70.00	35.00	S 51° 35' 39" W 70.00
D-18	27° 22' 11" RT	200.00	70.00	35.00	S 51° 35' 39" W 70.00
D-19	27° 22' 11" RT	200.00	70.00	35.00	S 51° 35' 39" W 70.00
D-20	27° 22' 11" RT	200.00	70.00	35.00	S 51° 35' 39" W 70.00
D-21	27° 22' 11" RT	200.00	70.00	35.00	S 51° 35' 39" W 70.00
D-22	27° 22' 11" RT	200.00	70.00	35.00	S 51° 35' 39" W 70.00
D-23	27° 22' 11" RT	200.00	70.00	35.00	S 51° 35' 39" W 70.00
D-24	27° 22' 11" RT	200.00	70.00	35.00	S 51° 35' 39" W 70.00
D-25	27° 22' 11" RT	200.00	70.00	35.00	S 51° 35' 39" W 70.00
D-26	27° 22' 11" RT	200.00	70.00	35.00	S 51° 35' 39" W 70.00
D-27	27° 22' 11" RT	200.00	70.00	35.00	S 51° 35' 39" W 70.00
D-28	27° 22' 11" RT	200.00	70.00	35.00	S 51° 35' 39" W 70.00
D-29	27° 22' 11" RT	200.00	70.00	35.00	S 51° 35' 39" W 70.00
D-30	27° 22' 11" RT	200.00	70.00	35.00	S 51° 35' 39" W 70.00