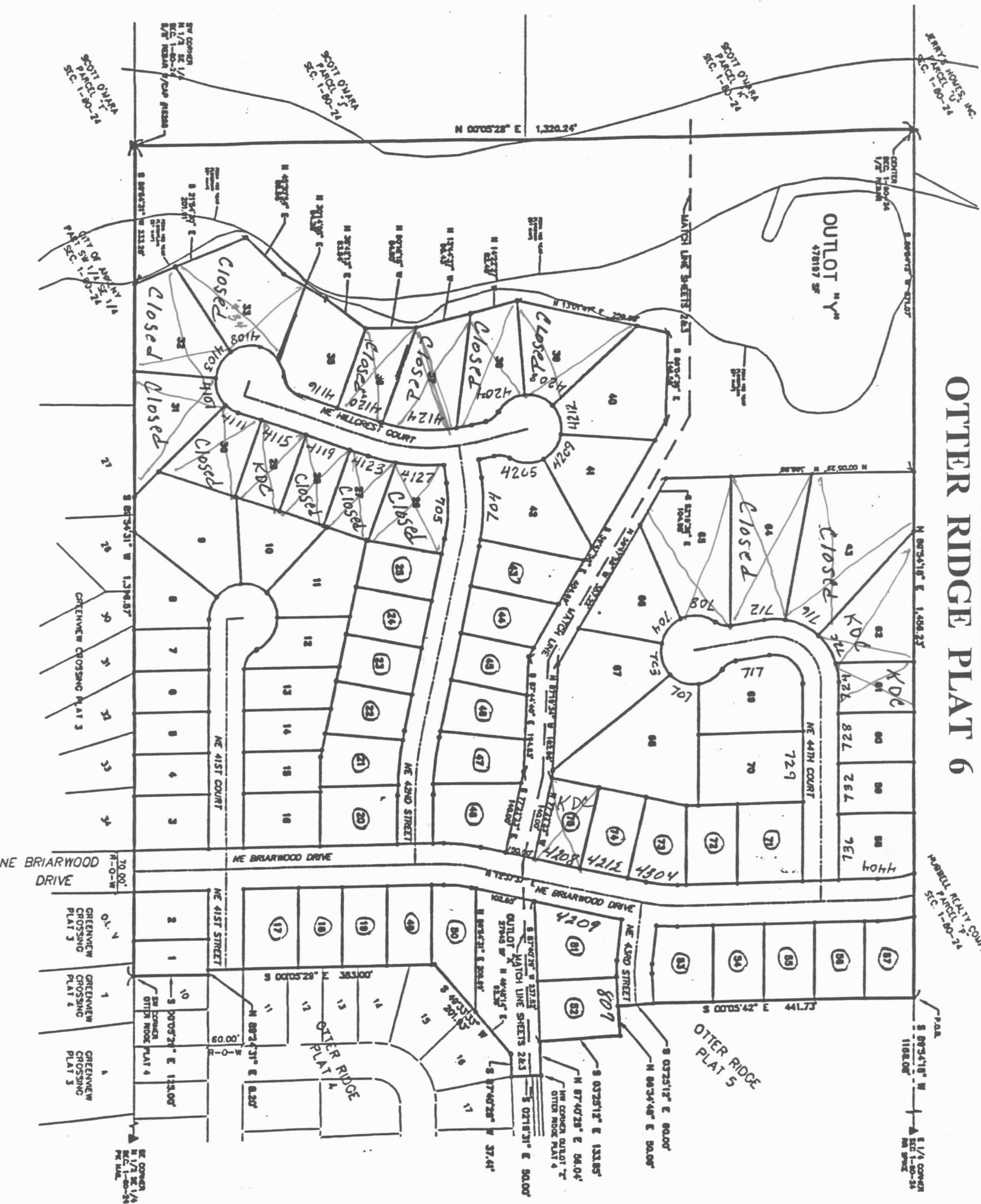


OTTER RIDGE PLAT 6



JERRY HONES, INC.
PARCEL U-2
SEC. 1-80-24

SCOTT O'HARA
PARCEL K-2
SEC. 1-80-24

SCOTT O'HARA
PARCEL J-2
SEC. 1-80-24

SCOTT O'HARA
PARCEL I-2
SEC. 1-80-24

MURIEL REALTY CORP.
PARCEL P-2
SEC. 1-80-24

1/4 CORNER
S 89°34'18" W
E 1/2 SEC. 1-80-24
1182.00'

NE BRIARWOOD DRIVE
N 0°-0' W
70.00'

1/4 CORNER
N 1/2 SEC. 1-80-24
E 1/2 SEC. 1-80-24
1111.00'

1/4 CORNER
N 1/2 SEC. 1-80-24
E 1/2 SEC. 1-80-24
1111.00'

1/4 CORNER
N 1/2 SEC. 1-80-24
E 1/2 SEC. 1-80-24
1111.00'

1/4 CORNER
N 1/2 SEC. 1-80-24
E 1/2 SEC. 1-80-24
1111.00'

1/4 CORNER
N 1/2 SEC. 1-80-24
E 1/2 SEC. 1-80-24
1111.00'