

FAIRMEADOWS NORTH PLAT 8

Section Corner	Found	Set
1/2" Utility Offset	▲	○
1/2" Utility Offset	●	□
1/2" Utility Offset	■	○
1/2" Utility Offset	□	○
1/2" Utility Offset	○	○
1/2" Utility Offset	○	○
1/2" Utility Offset	○	○
1/2" Utility Offset	○	○
1/2" Utility Offset	○	○
1/2" Utility Offset	○	○

OWNER/DEVELOPER
NEWTON HOUSING DEVELOPMENT CORPORATION
NEWTON, IA 50208

ENGINEER/SURVEYOR
SNYDER & ASSOCIATES, INC.
1011 1/2 S.W. SNYDER BLVD.
ANKENY, IOWA 50023
PHONE: 515-964-2020
FAX: 515-964-2020

LAND USE
PROPOSED SINGLE FAMILY DEVELOPMENT

ZONING
R-1 SINGLE-FAMILY RESIDENTIAL

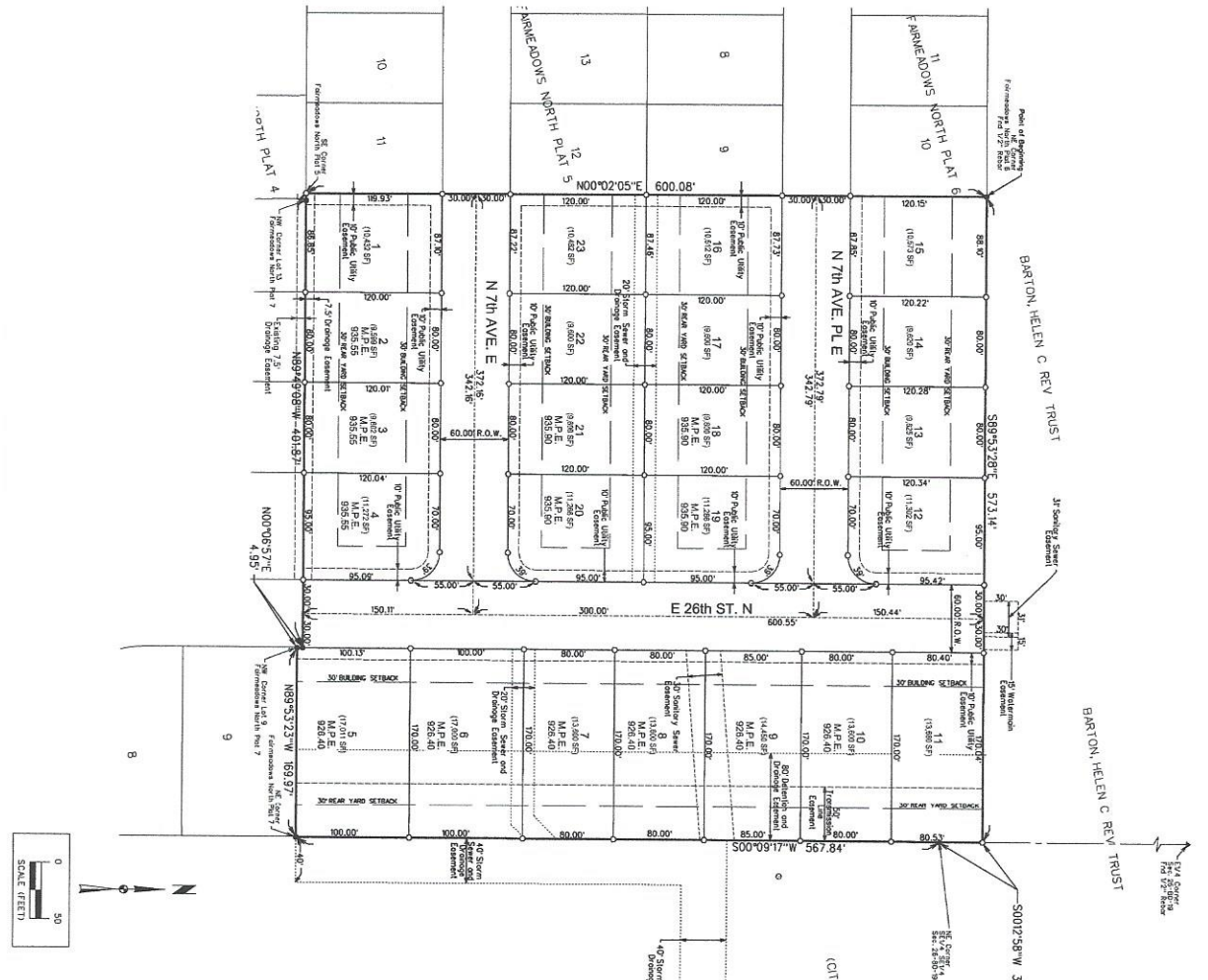
BULK REGULATIONS
NUMBER OF LOTS: 29 PLOTS
MINIMUM LOT SIZE REQUIRED: 9,000 S.F.
MINIMUM LOT FRONTAGE: 30' ALONG LOCAL STREETS
MINIMUM LOT WIDTH: 50'

NOTES
1. SHOWING STORM STREETS, SANITARY SEWERS AND WATER MAINS
2. IN ANY AREA WHERE A PUBLIC UTILITY EXISTENT (PROVIDER'S OR OTHERWISE) WITH AN EXISTING EASEMENT FOR SANITARY SEWERS OR WATER MAINS TO THE USE OF A RESIDENTIAL EXHIBIT FOR SANS IN THE PLAT THAT ARE IN CONFLICT WITH THE USE OF A DISSEMINATED PLAT, THE PLAT MUST BE REVISED TO SHOW THE USE OF THE PUBLIC UTILITY AS AN EASEMENT TO THE OWNER OF THE DISSEMINATED PLAT IN RESPECT TO THE SANITARY SEWERS AND WATER MAINS FOR THE DISSEMINATED PLAT. THE DISSEMINATED PLAT MUST BE REVISED TO SHOW THE USE OF THE PUBLIC UTILITY AS AN EASEMENT TO THE OWNER OF THE DISSEMINATED PLAT IN RESPECT TO THE SANITARY SEWERS AND WATER MAINS FOR THE DISSEMINATED PLAT.

3. CENTRAL DRAINAGE SYSTEMS SHALL BE DESIGNED AND CONSTRUCTED IN ACCORDANCE WITH THE IOWA DEPARTMENT OF TRANSPORTATION AND PUBLIC SAFETY DESIGN MANUAL AND THE IOWA DEPARTMENT OF TRANSPORTATION AND PUBLIC SAFETY DESIGN MANUAL. THE DESIGN MANUAL IS AVAILABLE AT: www.dot.iowa.gov. THE DESIGN MANUAL IS AVAILABLE AT: www.dot.iowa.gov.

4. STRUCTURES, BUILDINGS AND UTILITIES SHALL BE DESIGNED AND CONSTRUCTED IN ACCORDANCE WITH THE IOWA DEPARTMENT OF TRANSPORTATION AND PUBLIC SAFETY DESIGN MANUAL AND THE IOWA DEPARTMENT OF TRANSPORTATION AND PUBLIC SAFETY DESIGN MANUAL. THE DESIGN MANUAL IS AVAILABLE AT: www.dot.iowa.gov. THE DESIGN MANUAL IS AVAILABLE AT: www.dot.iowa.gov.

5. REFER TO THE FAIRMEADOWS PLAT 8 CONSTRUCTION DOCUMENTS FOR MINIMUM PROTECTION ELEVATIONS.



PLAT DESCRIPTION

A PART OF THE EAST 1/4 OF SECTION 36, TOWNSHIP 13N, RANGE 12E, COUNTY OF JASPER, IOWA, AND MORE PARTICULARLY DESCRIBED AS FOLLOWS:

BEING A PART OF THE EAST 1/4 OF SECTION 36, TOWNSHIP 13N, RANGE 12E, COUNTY OF JASPER, IOWA, AND MORE PARTICULARLY DESCRIBED AS FOLLOWS:

THE NORTH-EAST CORNER OF FAIRMEADOWS NORTH PLAT 8, FAIRMEADOWS NORTH PLAT 7, FAIRMEADOWS NORTH PLAT 6, FAIRMEADOWS NORTH PLAT 5, FAIRMEADOWS NORTH PLAT 4, FAIRMEADOWS NORTH PLAT 3, FAIRMEADOWS NORTH PLAT 2, FAIRMEADOWS NORTH PLAT 1, FAIRMEADOWS NORTH PLAT 0, FAIRMEADOWS NORTH PLAT -1, FAIRMEADOWS NORTH PLAT -2, FAIRMEADOWS NORTH PLAT -3, FAIRMEADOWS NORTH PLAT -4, FAIRMEADOWS NORTH PLAT -5, FAIRMEADOWS NORTH PLAT -6, FAIRMEADOWS NORTH PLAT -7, FAIRMEADOWS NORTH PLAT -8, FAIRMEADOWS NORTH PLAT -9, FAIRMEADOWS NORTH PLAT -10, FAIRMEADOWS NORTH PLAT -11, FAIRMEADOWS NORTH PLAT -12, FAIRMEADOWS NORTH PLAT -13, FAIRMEADOWS NORTH PLAT -14, FAIRMEADOWS NORTH PLAT -15, FAIRMEADOWS NORTH PLAT -16, FAIRMEADOWS NORTH PLAT -17, FAIRMEADOWS NORTH PLAT -18, FAIRMEADOWS NORTH PLAT -19, FAIRMEADOWS NORTH PLAT -20, FAIRMEADOWS NORTH PLAT -21, FAIRMEADOWS NORTH PLAT -22, FAIRMEADOWS NORTH PLAT -23, FAIRMEADOWS NORTH PLAT -24, FAIRMEADOWS NORTH PLAT -25, FAIRMEADOWS NORTH PLAT -26, FAIRMEADOWS NORTH PLAT -27, FAIRMEADOWS NORTH PLAT -28, FAIRMEADOWS NORTH PLAT -29.

FAIRMEADOWS NORTH PLAT 8		LOT LAYOUT EXHIBIT	
SNYDER & ASSOCIATES, INC.		NEWTON, IOWA	
Project No: 117-0077	Sheet: 1 of 1	2727 S.W. SNYDER BLVD. ANKENY, IOWA 50023 515-964-2020 www.snyder-associates.com	MARK: KSS Engineer: KSS Checked By: E.J.N. Date: 08/29/2017 Scale: 1"=50' Title: PL
Project No: 117-0077		Sheet 1 of 1	



LIGHTING TABLE

TYPE	QUANTITY
A. LIGHT POLE	3

NOTE:
 CONTRACTOR TO PROVIDE STREET LIGHTS IN LOCATION SHOWN. COORDINATE FINAL LOCATION WITH CITY NEWTON AND INSTALLATION WITH UTILITY PROVIDER.



FAIRMEADOWS NORTH PLAT 8
SIGNAGE, STRIPING AND LIGHTING PLAN

Engineer: KSS	Checked By: E.J.N.	Scale: 1"=40'
Technician: T.S.	Date: 06/15/2017	Field No: R2

MARK	REVISION	DATE
1	REVISED AS PER CITY COMMENTS	06/04/17